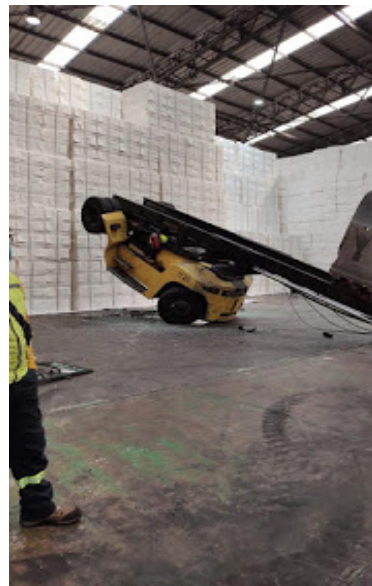




ILA-USMX JOINT SAFETY COMMITTEE

OSH ALERT 2020-17 [13 October 2020]

Industrial Truck Mast Connection Failures



The ILA~USMX Joint Safety Committee (JSC) has taken note of a series of fatal accidents occurring at foreign ports, wherein the operators of industrial trucks have been crushed by the failure of mast connections with the resultant collapse. The last occurred at Puerto Coronel, Chile just last month (23 September). We provide a link that provides further information about that accident: <http://www.blueoceana.com/?p=4719>

We also know that a globally operating marine terminal operator has issued guidance to its management that increased visual inspections of stress points (supplemented by dye penetrant examinations) should be carried out on such equipment.

The JSC has inquired of the manufacturer of the machine implicated in the Puerto Coronel accident, asking if any official guidance has been provided or contemplated. We await their response.

In the meantime, we urge increased diligence on the part of management, maintenance staff and operators to redouble your efforts in the daily inspection of industrial truck stress points/connection points as we work to foreclose on similar incidents occurring at ports within our jurisdiction.

Got a question about this particular subject? Write to the JSC at: blueoceana@optonline.net

Working Together For The Benefit Of All

ILA-USMX OSH Alerts are devised to reflect the best possible information and guidance, and are products of diligent research and the most up to date subject matter knowledge. Consequently, while the information contained herein is believed to be accurate, owing to a host of factors ILA-USMX can convey no direct or implied warranty relative to the reliance of parties upon content.